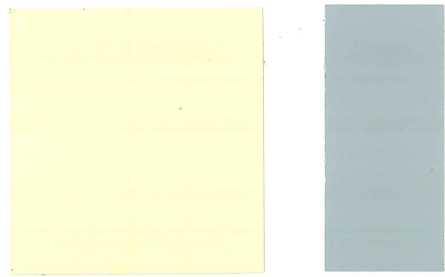


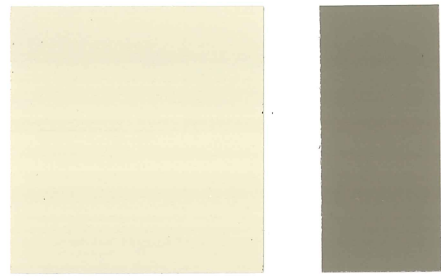
Jackson Antique

Wooly Thyme



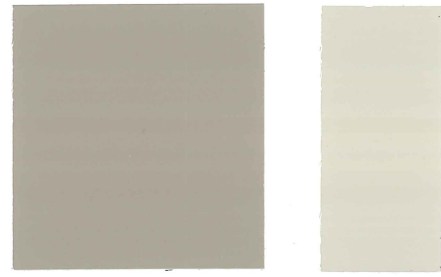
Pale Organza

Citadel Blue



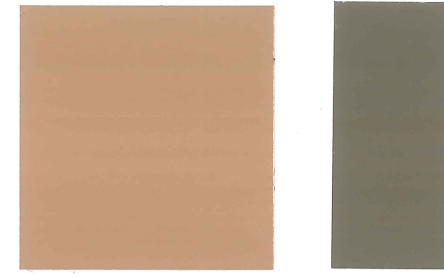
Yarmouth Oyster

Milkweed



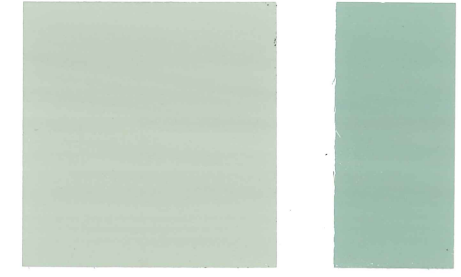
Rain Barrel

Parship



Maple

Portobello



Historic Morning Dew

Melville



Beet Root



Winter Harbor



China Aster



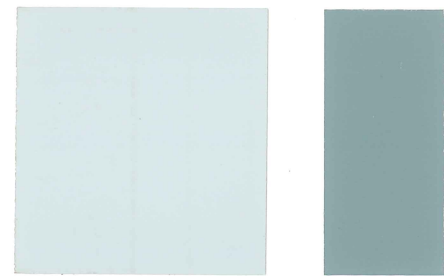
Rawhide



Portsmouth Spice

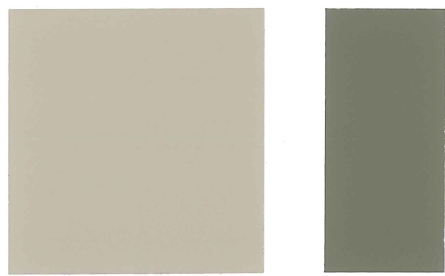


Gedney Green



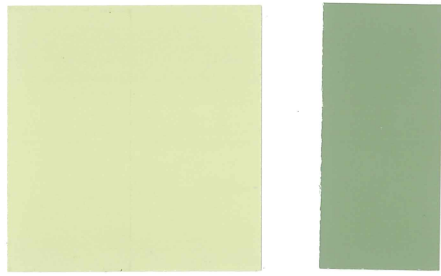
Tudor Ice

Standish Blue



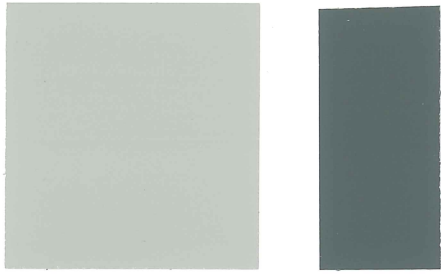
Langdon Dove

Tankard Gray



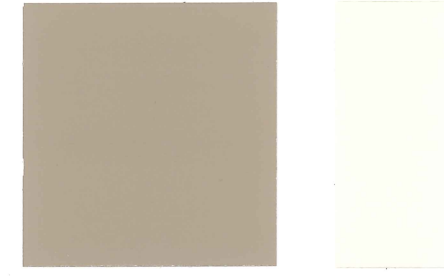
Marrett Apple

Whispering Willow



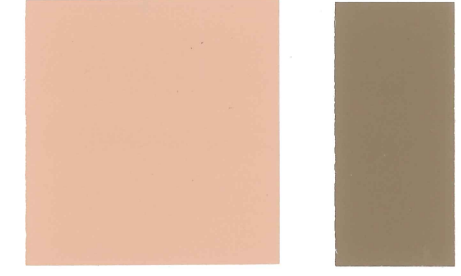
Quincy Granite

Polished Pewter



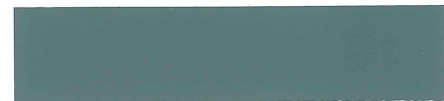
Winter Meadow

Andover Cream

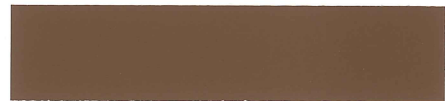


Rundlet Peach

Palomino



Portsmouth Blue



Brownstone

Hitching Post



Otis Madeira

Wainscott Green



Sayward Pine

Cummings Oak



Bargeboard Brown

Pumpkin



Covered Bridge

Toffee



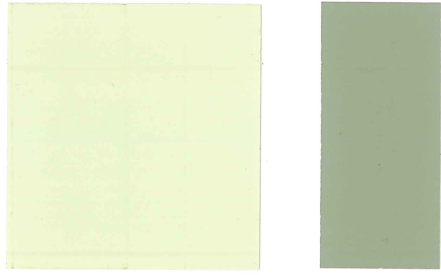
Jonquil

India Trade



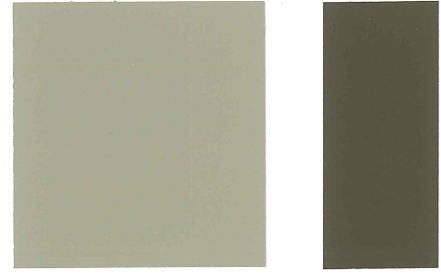
Phelps Putty

Hitching Post



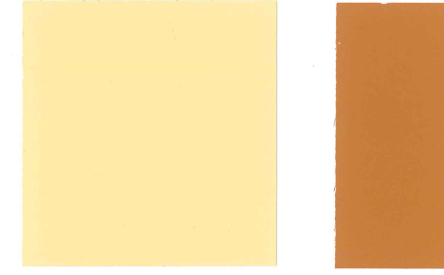
Elise

Wainscott Green



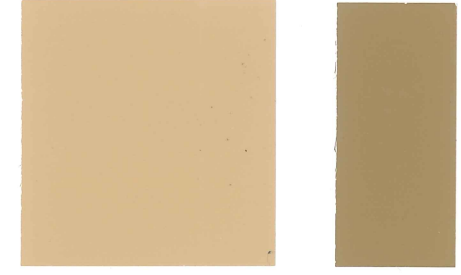
Sandy Bluff

Cummings Oak



Knightley Straw

Pumpkin



Coastal Sand

Toffee



Alden Till



Chocolate

Wild Oats



Picholine

Ginger Root



Newbury Moss

Nankeen



Shaker Red

Flaxen Field



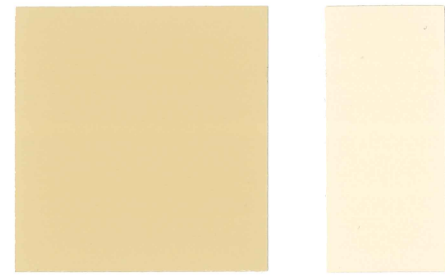
Baize

Warren Tavern



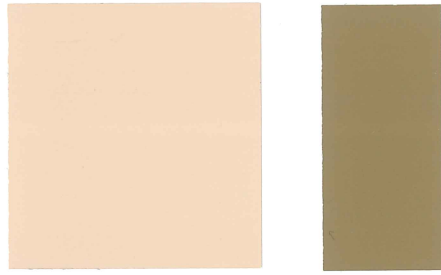
Plymouth Beige

Britches



Asian Jute

Wild Oats



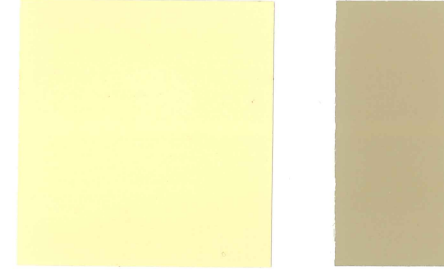
Tailor's Buff

Ginger Root



Jewett White

Nankeen



Lady Banksia

Flaxen Field



Bayberry Wax

Warren Tavern



Richardson Brick



Brookside



Moss Glen



Wooden Nutmeg



Burnt Umber



Codman Claret

Colors shown are available in interior and exterior finishes

All colors are affected by age, light, heat and printing processes. Chips on card may vary in color or finish from the actual paint in the container. To achieve clarity and depth of color, some colors may require multiple coats. Colors shown are custom tints and may be slightly higher in price.

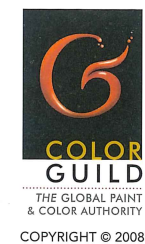
Historic Colors of America showcases colors carefully selected from historic buildings and objects which authentically reflect the colors of our past. Coordinated combinations help you create body, trim, and accent paint schemes to dramatize your home, inside and outside. Whether you are decorating an old house or a contemporary one, these combinations add the character and distinction of America's colorful past.

Curators and preservationists from Historic New England work with other museums and private homeowners from across the country to understand, preserve, and recreate the Historic Colors of America.

Historic New England is the oldest, largest, and most comprehensive regional preservation organization in the nation. It offers a unique opportunity to experience the lives and stories of New Englanders through their homes and possessions.

Ask your paint dealer for information about the complete palette of 149 Historic Colors of America, paint chart available through an authorized Color Guild member.

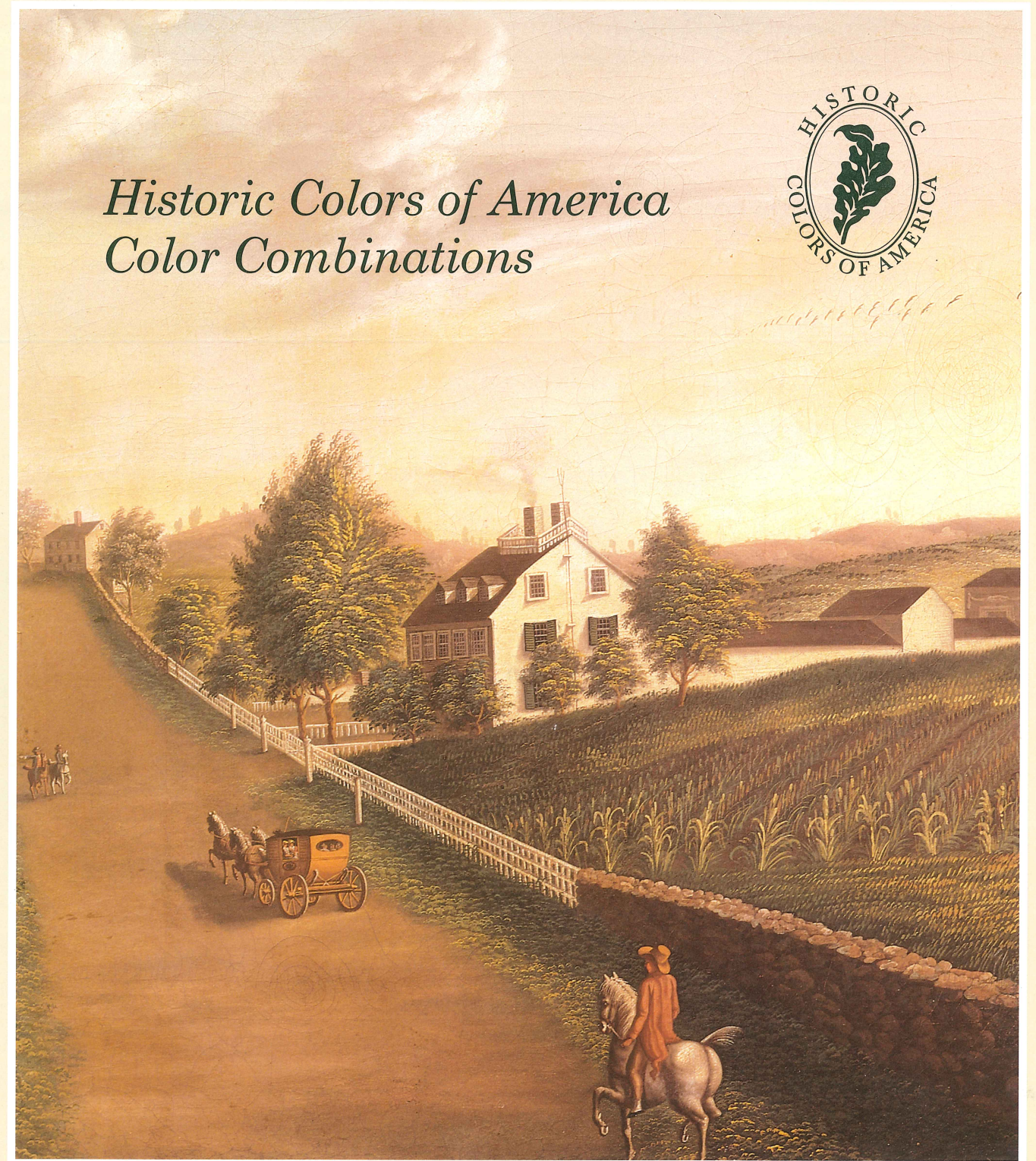
Cover image is a detail of the painting, *Ezekiel Hersey Derby Farm*, c. 1800, from the collection of Historic New England.



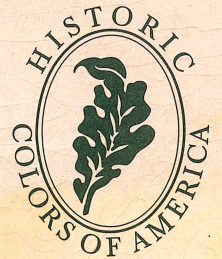
All colors approved and authorized by Historic New England and made by a CG member.



141 Cambridge Street, Boston, MA 02114-2702
617-227-3956, www.HistoricNewEngland.org



Historic Colors of America Color Combinations



MILLER PAINT CO.

SINCE 1890

An Employee Owned Company
www.millerpaint.com



THE DECORATED WALL



186 SE Mill St. Dallas, OR 503.623.3812