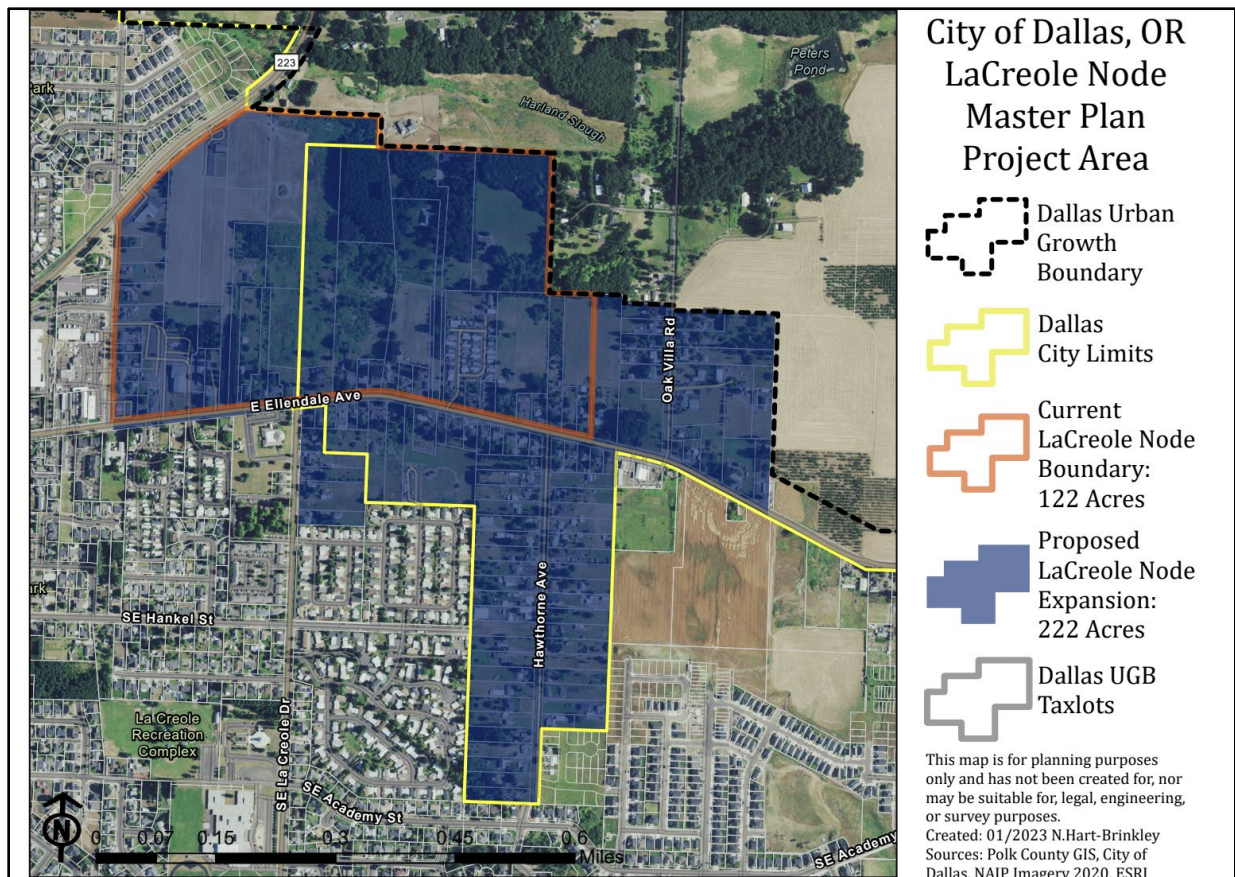


FOR IMMEDIATE RELEASE

February 17, 2023



The City of Dallas Launches Renewed Update to the Study of the La Creole Node Area

The City of Dallas is pleased to announce the start of an updated planning study of the La Creole Node area. This study, which will be conducted by our Economic & Community Development and Public Works Departments in collaboration with our consultant team, comprised of Healthy Sustainable Communities and Green Top Planning, Development, and Research, marks the first comprehensive examination of the area in over two decades. The City of Dallas is excited to explore potential zoning options to increase commercial and multi-family shortages within the area. The project study area comprises 222 acres and 152 tax lots, including acreage and lots outside the original 121.98 acres and 60 tax lots within the La Creole Node Area. This study will be conducted in coordination with the City’s ongoing study of the wider area for infrastructure improvements.

-CONTINUES-



Come thrive with us, we invest in people and business

PRESS RELEASE

The purpose of this planning study is to explore potential zoning options that will bolster the City's short and long-term ability to attract new businesses and multi-family builders to the Dallas area. The consultant team will work with City staff, community stakeholders, and the general public to provide input and recommendations on potential concepts and infrastructure development needs that will be necessary to provide services to this area of the City, facilitating expansion for residents and businesses to locate within the new area.

Throughout the next several months, the Consultant team will be actively engaged in identifying potential sites for commercial or multi-family development, understanding infrastructure requirements, and assessing development needs. Furthermore, during the summer months, the Consultant team will provide public information on the La Creole Node area at City Council meetings to keep residents informed and engaged in the planning process.

The City of Dallas is committed to proactively addressing the needs of our community and remains committed to identifying proposed zoning and infrastructure solutions for the La Creole Node area that foster long-term, sustainable development. We look forward to the results of this study and the positive impact it will have on the long-term growth of our community.

By the end of February, residents will be able to subscribe to automatically receive information on the project on the City's website at www.dallasor.gov/newsletter/subscriptions.

Please direct all media inquiries to:

Charlie Mitchell
Economic & Community Development Director
City of Dallas, Oregon
Charlie.mitchell@dallasor.gov
503-831-3565

-END-